



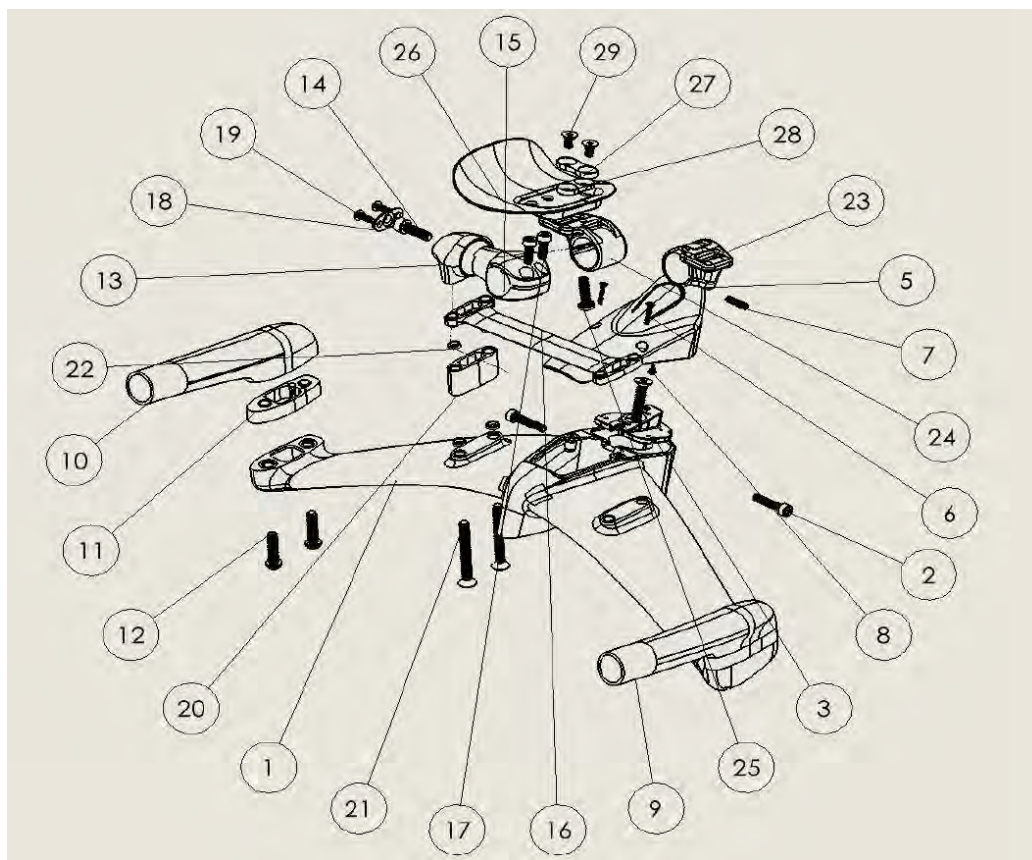
IA (2.0) СБОРКА РУЛЯ



www.feltrussia.ru

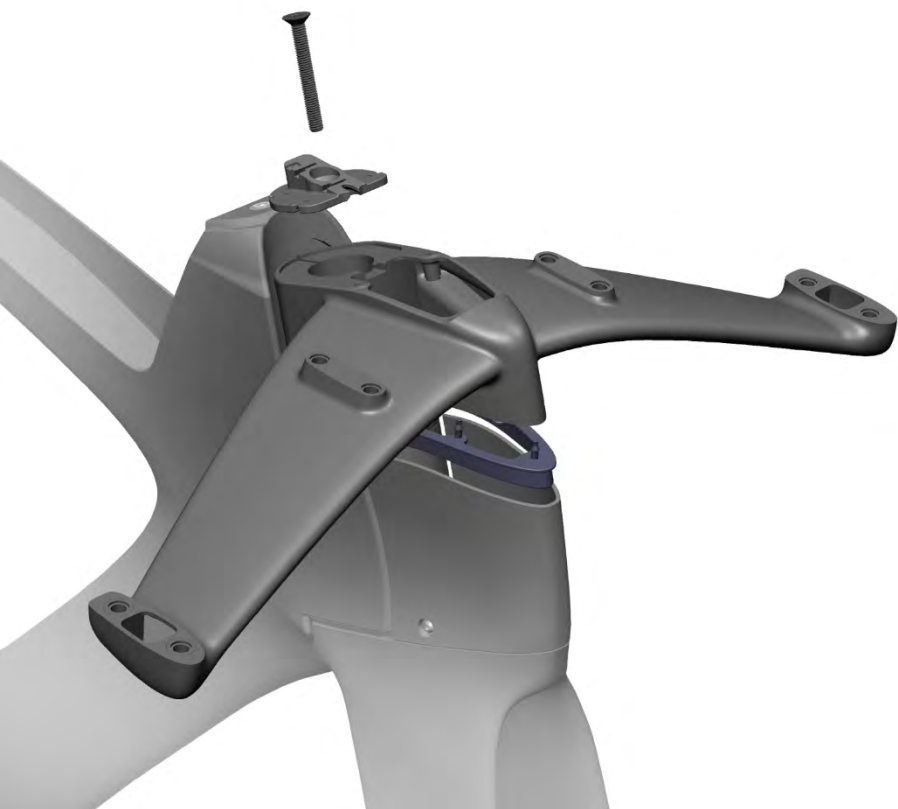


БОМ - НЕОБХОДИМЫЕ ДЕТАЛИ





Aerobar-Stem - СБОРКА



Необходимые предметы

- Aerobar-Stem-Combination: Felt Dagger Direct 2.0 ASC
- (2) M5X0.8X25MM SOCKET HEAD HEX DRIVE SCREWS
- STEM TOP CAP
- (1) M6X1.0X30MM FLAT HEAD HEX DRIVE SCREW

Необходимые инструменты

- 4, 5mm hex drive with torque wrench.

Рекомендуемые моменты

- M5X0.8X25MM SOCKET HEAD HEX DRIVE SCREWS 5-6NM
- M6X1.0X30MM FLAT HEAD HEX DRIVE SCREW Adjust/tighten headset

Этапы сборки - ножка и основание баи

1. Install the expander plug into steer tube
2. Mount Aerobar/Stem
3. Install the top cap assembly and adjust/tighten the headset (if using SRAM e-tap install Blip Box before installing top cap)
4. Torque the stem bolts to spec



Установка крышки аэробара

Необходимые предметы

- AEROBAR COVER
- (2) M3X0.5X15MM FLAT HEAD HEX DRIVE SCREWS
- (1) M4X18MM SET SCREW CONE POINT HEX DRIVE
- (1) M3X5MM THREAD-FORMING SCREW FOR THIN PLASTIC HEX DRIVE

Необходимые инструменты

- 2,2.5mm hex drive with torque wrench.

Рекомендуемые тоики

- M3X0.5X15MM FLAT HEAD HEX DRIVE SCREWS (2NM)
- M4X18MM SET SCREW CONE POINT HEX DRIVE (2NM)
- M3X5MM THREAD-FORMING SCREW FOR THIN PLASTIC HEX DRIVE (adjust till proper button contact)

Этапы сборки - ножка и основание баи

1. Wireless: for SRAM, mount BlipBox to stem top cap using supplied hardware. For Shimano, skip to step 2.

Electronic: for Shimano Di2 systems with Junction-A, mount Junction-A to stem top cap.

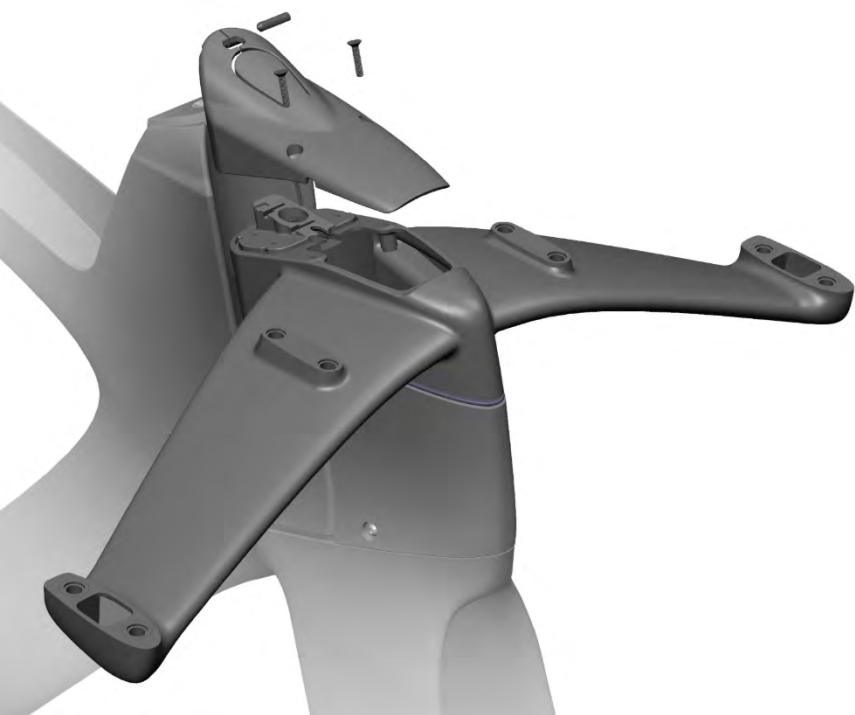
Mechanical: skip to step 2

2. Install M4x18mm set screw cone point hex drive into aerobar cover. Adjust till proper button contact.

Wireless/mechanical: forward position.

Electronic (Di2 systems with Junction-A): rearward position.

3. Mount aerobar cover onto stem. install (2) m3x0.5x15mm flat head hex drive screws through aerobar cover and into stem





ЗАПЧАСТИ ДЛЯ АЭРОБАРА - ДЕРЖАТЕЛЬ ДЛЯ РУК В СБОРЕ



Необходимые предметы

- Dagger direct 2.0 Handholds, Left and Right
- Dagger direct 2.0 Handhold spacer selection (10,20,30,40mm)
- Dagger direct 2.0 Handhold bolt selection (M6 x 25,35,45,55,65mm)
- Fit washer
- Grease

Необходимые инструменты

- 4mm hex drive with torque wrench.

Рекомендуемые тоики

- M6 Button head screw (10NM)

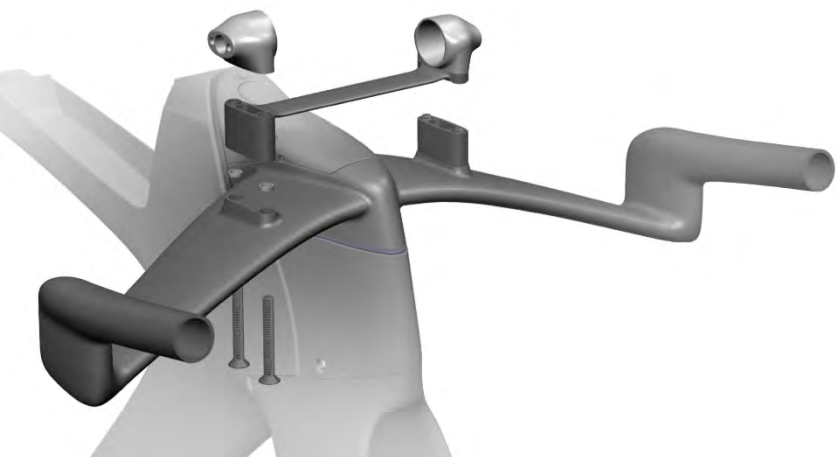
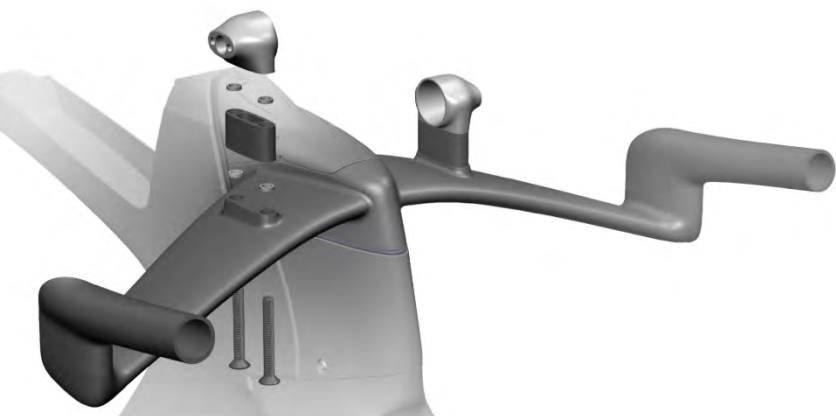
Этапы сборки - поручни

1. **Determine desired stack** height and collect correct spacers and hardware from chart below.
2. Apply a small amount of grease to threads and insert screws through base bar
3. Put desired spacers on base bar and thread screws into hand holds
4. Torque to spec

Высота штабеля (из стека кадров)	Конфигурация распорки	Длина болта	Установочные шайбы
70	40	65	0
60	30	55	0
50	20	45	0
40	10	35	0
30	0	25	4



ЗАПЧАСТИ ДЛЯ АЭРОБАРА - КРОНШТЕЙН СТОЯКА В СБОРЕ



Необходимые предметы

- Dagger Direct 2.0 riser bracket
- Dagger Direct 2.0 Spacer kit (5,10,20,30,40mm)
- Dagger Direct 2.0 M6 Screw kit (35,45,55,65,75mm)
- Dagger Direct Bridge
- Fit washers
- Grease

Необходимые инструменты

- 4mm hex drive with torque wrench.

Рекомендуемые тоики

- M6 FLAT HEAD HEX DRIVE SCREWS (10NM)

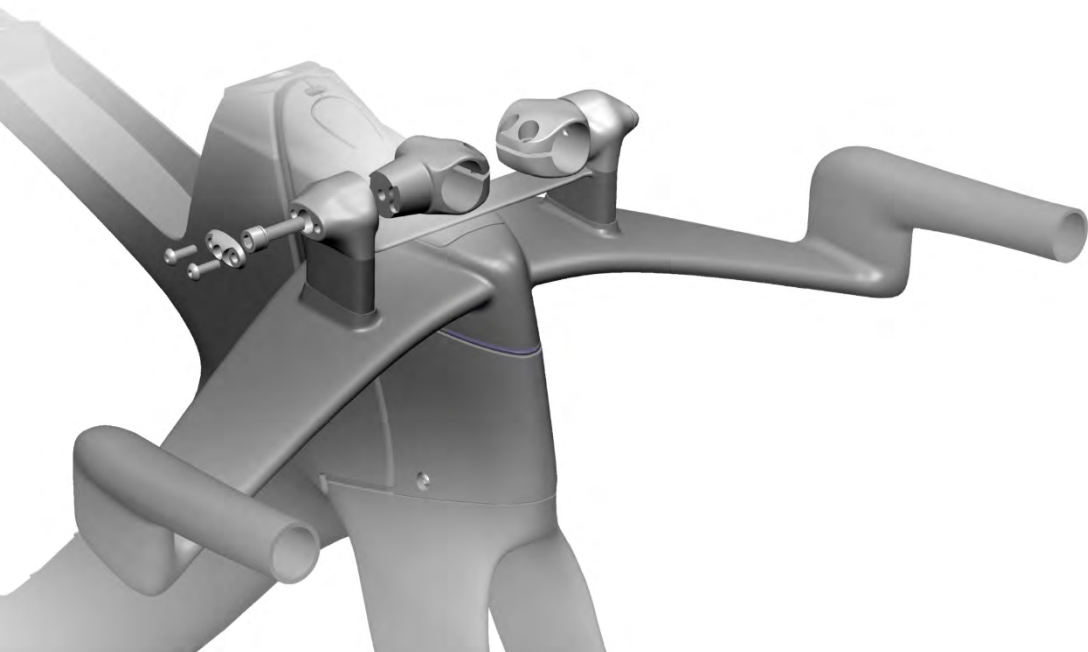
Этапы сборки - ножка и основание баи

1. **Determine desired stack height** and collect correct spacers and hardware from chart below. (if using stack over 82mm be sure to use the bridge)
2. Apply a small amount of grease to the selected screws and insert through base bar
3. Install fit washers on each screw before installing spacer. Install desired spacer stack on screws making sure to install fit washers between each spacer (at every mating point use fit washers except for bridge mating points)
4. Thread screws into riser bracket and torque

Stack height (from frame stack)	Spacer Config	Total Spacers	Bolt Length	Number of Fit washers
102	35+5+bridge	45	75	8
97	35+bridge	40	75	4
92	25+5+bridge	35	65	8
87	25+bridge	30	65	4
82	25	25	55	4
77	20	20	55	8
72	10 + 5	15	45	12
67	10	10	45	8
62	5	5	35	8
57		0	35	4



ДЕТАЛИ АЭРОБАРА - УДЛИНИТЕЛЬНЫЙ КРОНШТЕЙН В СБОРЕ



Необходимые предметы

- Dagger 2.0 riser bracket extraction cap
- Dagger 2.0 extension bracket
- (4) M4x0.7x12MM ROUNDED HEAD HEX DRIVE SCREW
- (2) M6x1.0x25MM SOCKET HEAD HEX DRIVE SCREW
- Carbon paste
- Grease

Необходимые инструменты

- 2.5, 5 mm hex drive with torque wrench.

Рекомендуемые тоики

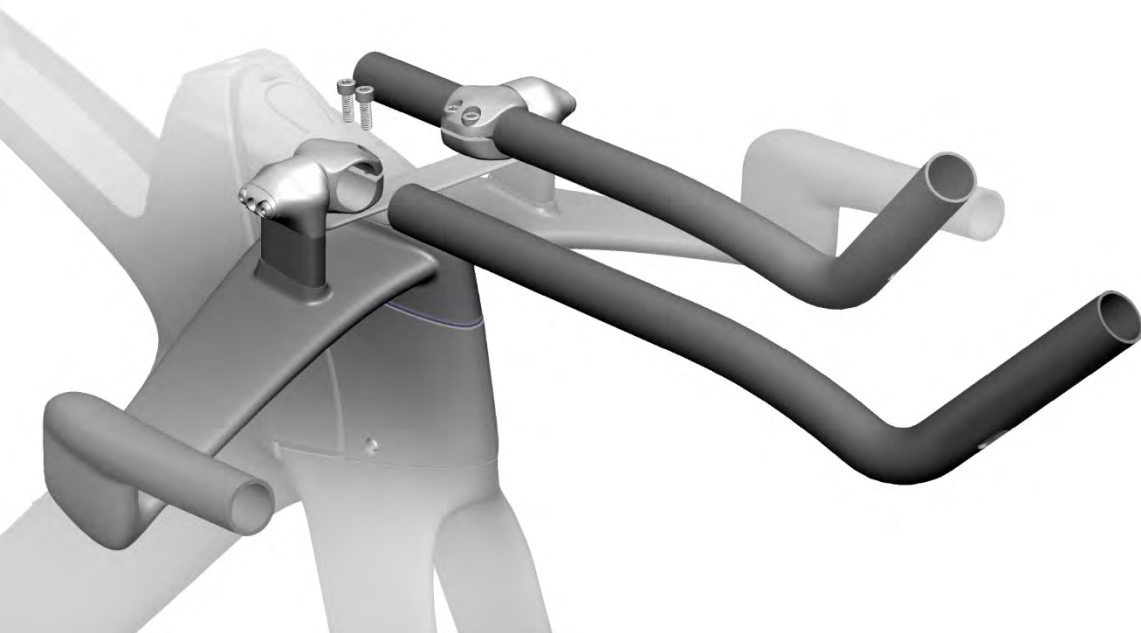
- M4x0.7x12MM ROUNDED HEAD HEX DRIVE SCREW (2NM)

Этапы сборки - ножка и основание баи

1. Apply a small amount of grease to the M6 socket head and threads, insert into the Riser bracket
2. Install the 2 M4 screws into the riser bracket extraction cap and thread into the riser bracket and torque.
3. Apply carbon paste to the extension bracket conical portion and thread M6 screw using 5mm allen into extension bracket , do not fully torque



ДЕТАЛИ АЭРОБАРА - УДЛИНИТЕЛЬ В СБОРЕ



Необходимые предметы

- Extensions
- (4) M5x0.8x14MM
- Grease

! Необходимые инструменты

- 4, 5mm hex drive with torque wrench.

Рекомендуемые тоики

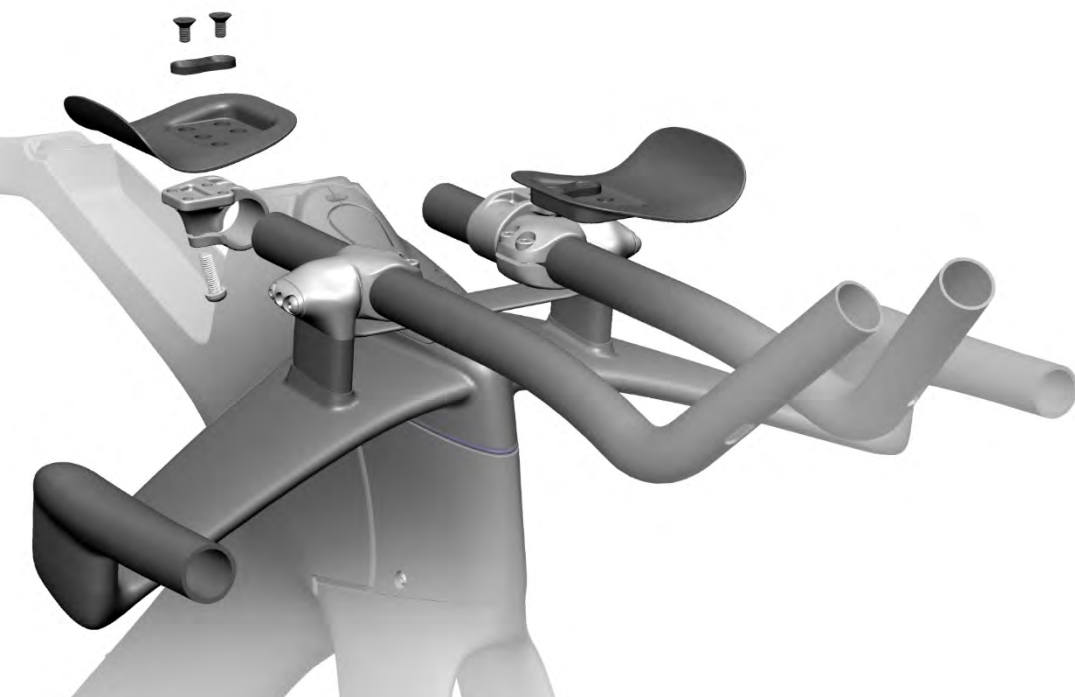
- M6x1.0x25MM SOCKET HEAD HEX DRIVE SCREW (12NM)
- M5x0.8x14MM SOCKET HEAD HEX DRIVE SCREW (8NM)

Этапы сборки - ножка и основание баи

1. Apply grease to threads of M5 screws and thread into extension brackets
2. Inset extension into extension bracket
3. Find desired reach angel and rotation angle
4. Torque M5 and M6 screws



ДЕТАЛИ АЭРОБАРА - НАЛОКОТНИКИ В СБОРЕ



Необходимые предметы

- DAGGER DIRECT 2.0 LEFT AND RIGHT ARM REST BRACKET
- BAYONETE 3.1 LEFT AND RIGHT ARM REST HOLDER
- Arm pad
- Dog bone washers
- M6X1.0X15MM BUTTON HEAD HEX DRIVE SCREWS
- M5X12MM SET FLAT HEAD HEX DRIVE SCREWS

Г Необходимые инструменты

- 4, 5mm hex drive with torque wrench.

Рекомендуемые тоики

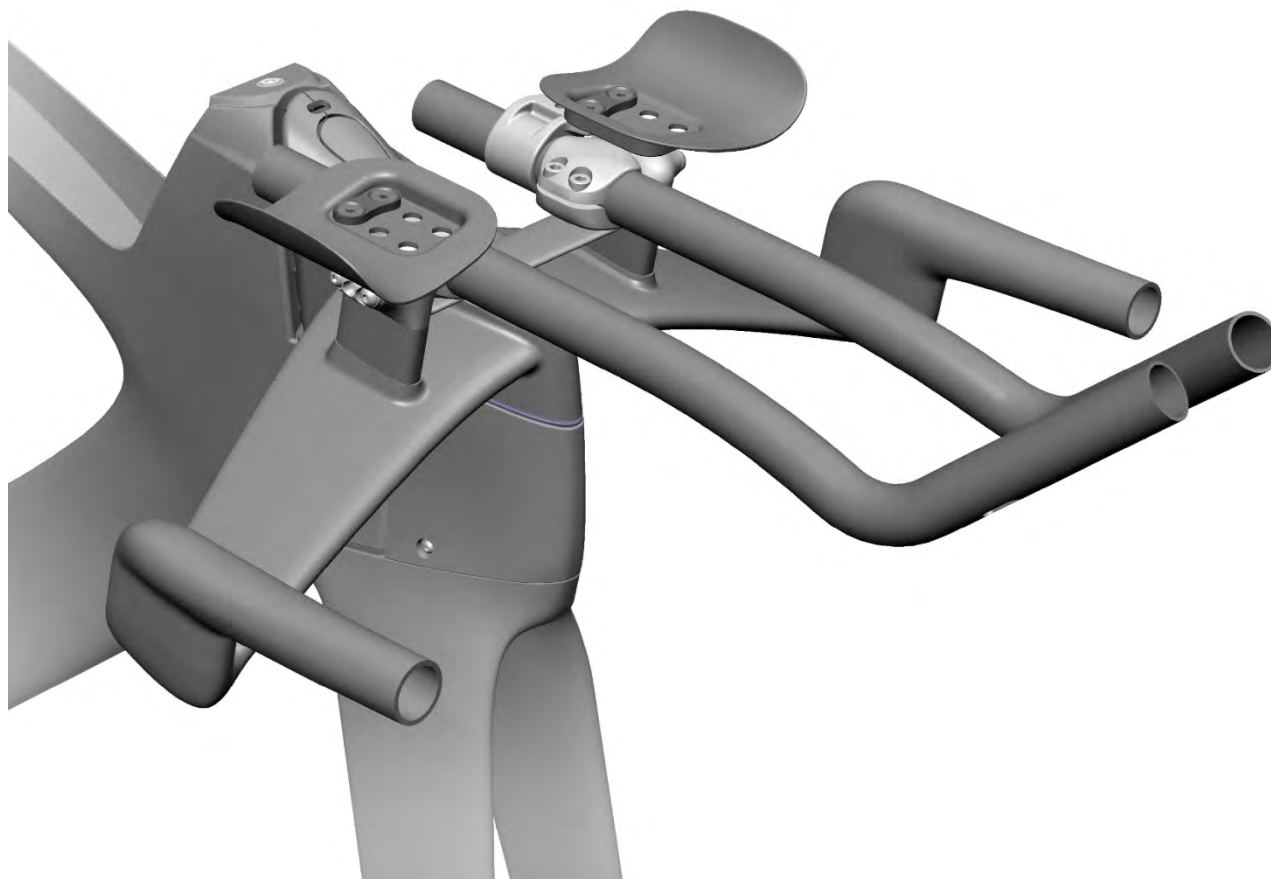
- M6X1.0X15MM BUTTON HEAD HEX DRIVE SCREWS (10NM)
- M5X12MM SET FLAT HEAD HEX DRIVE SCREWS (6NM)

Этапы сборки - ножка и основание баи

1. Apply grease to threads of M5 screw and thread into arm rest bracket and slide onto extension
2. Apply grease to M6 screws and install using dog bone washer (short dog bone washer can be used for more side to side adjustment) on arm rest holder screw onto arm rest bracket and torque
3. Rotate arm rest brackets to desired position and torque M5 screw
4. Install arm rest pads

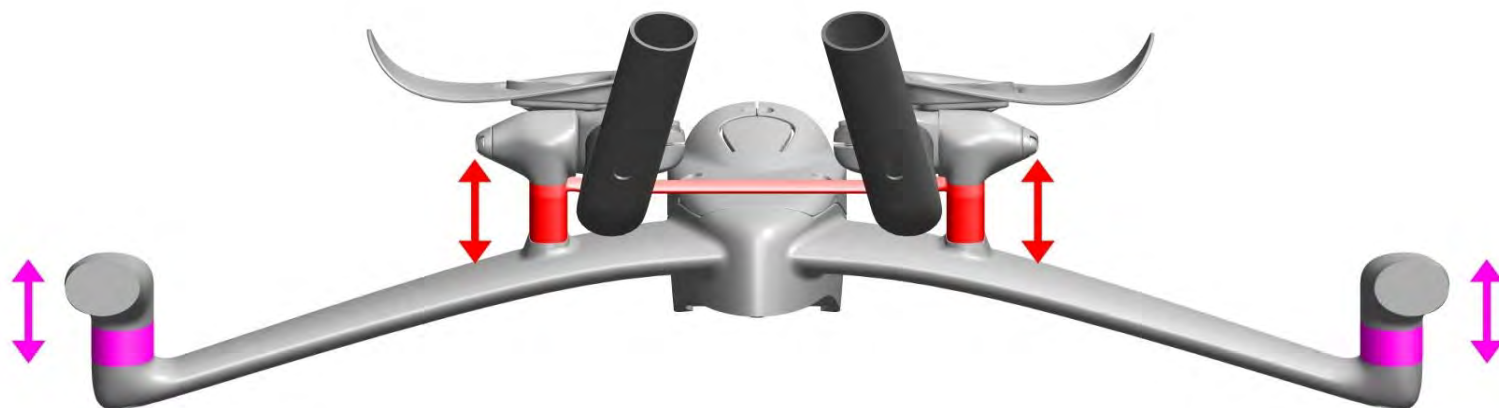


АЭРОБАР - В СБОРЕ



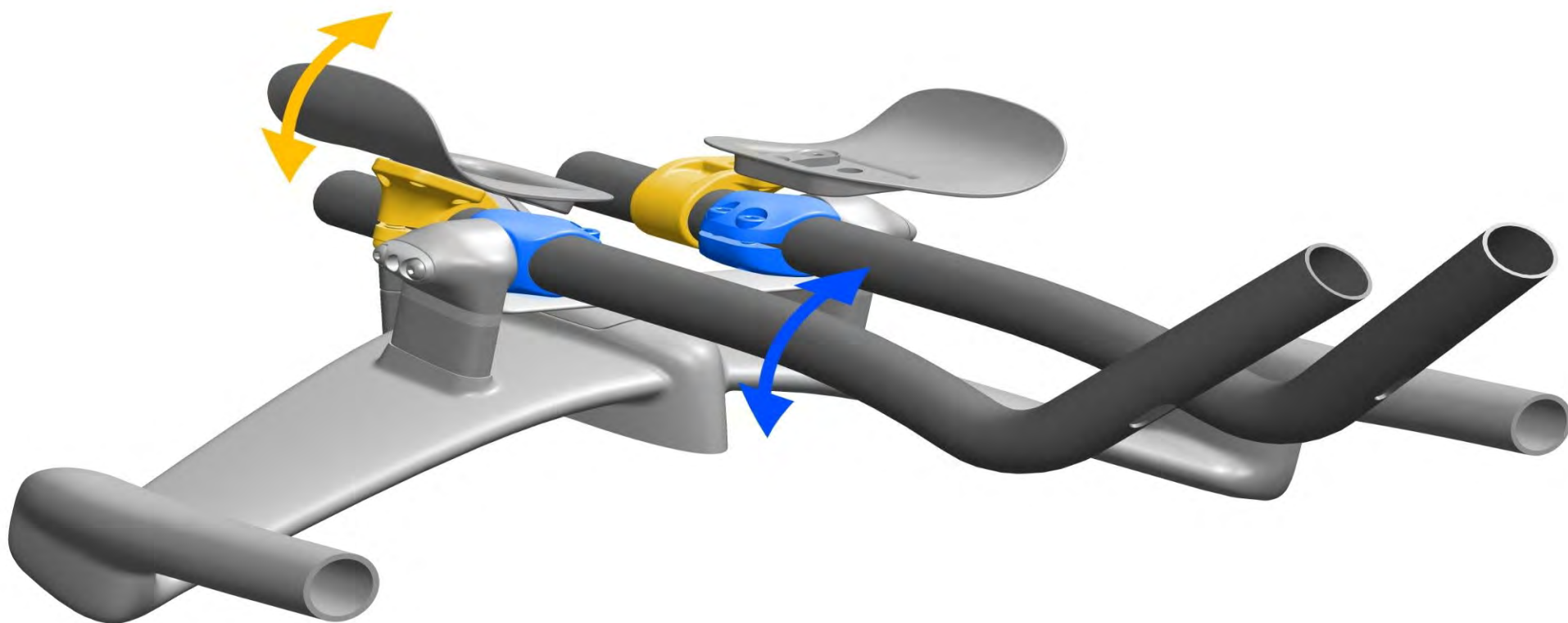


Стек



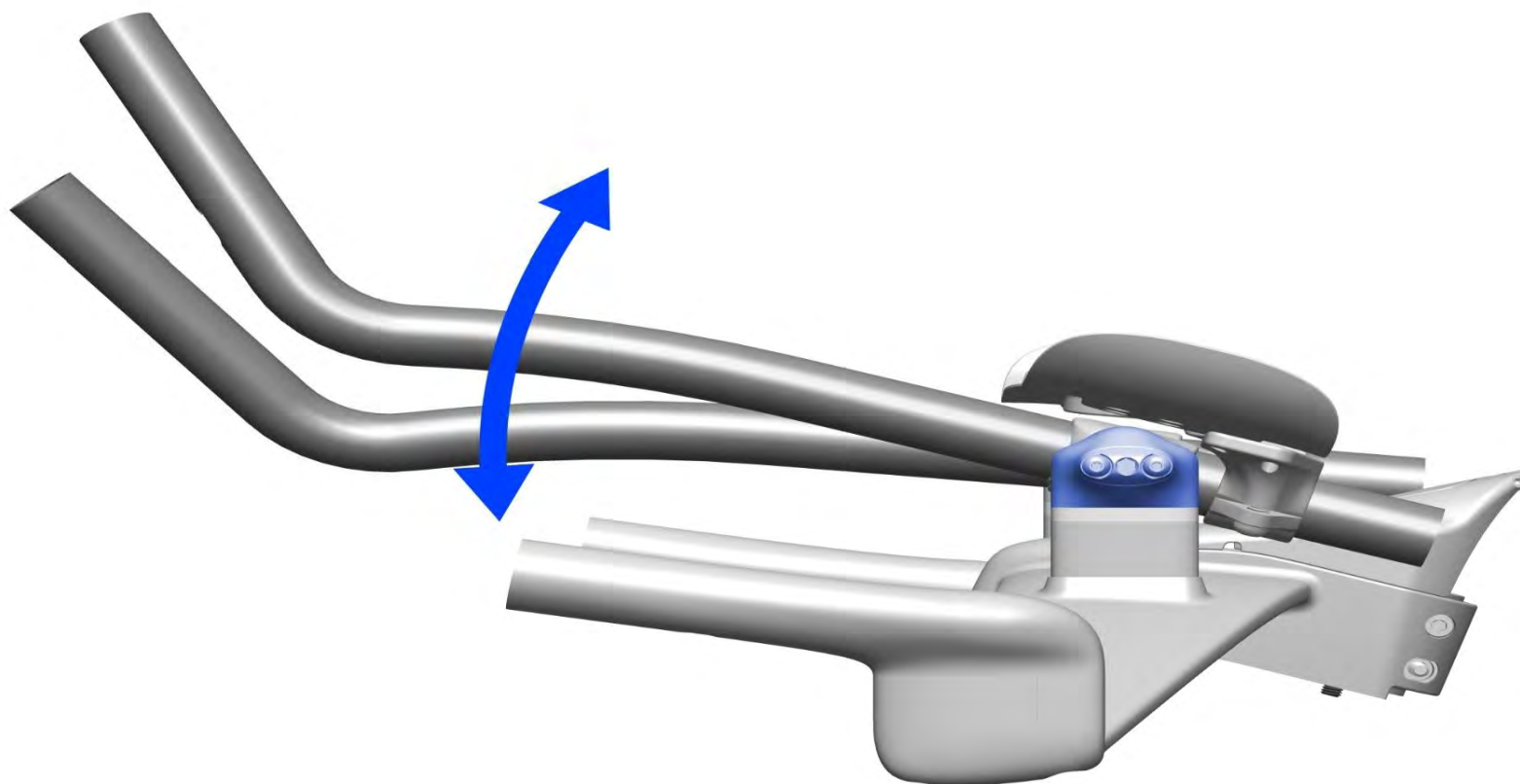


Медиальная/латеральная регулировка



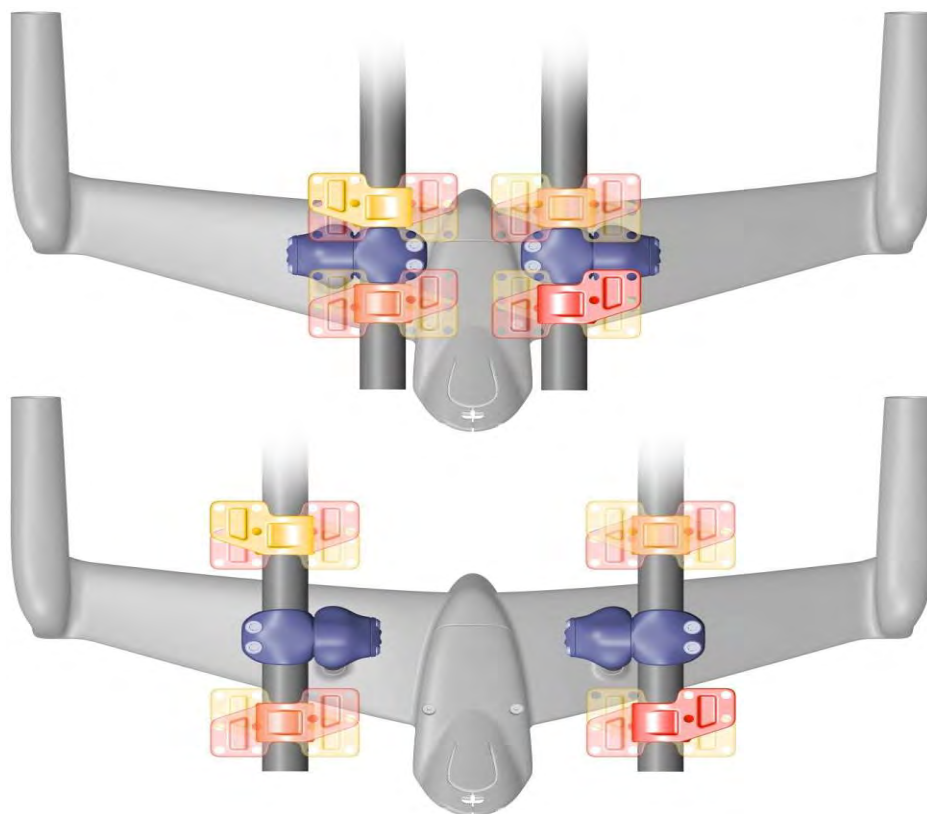


Регулировка угла



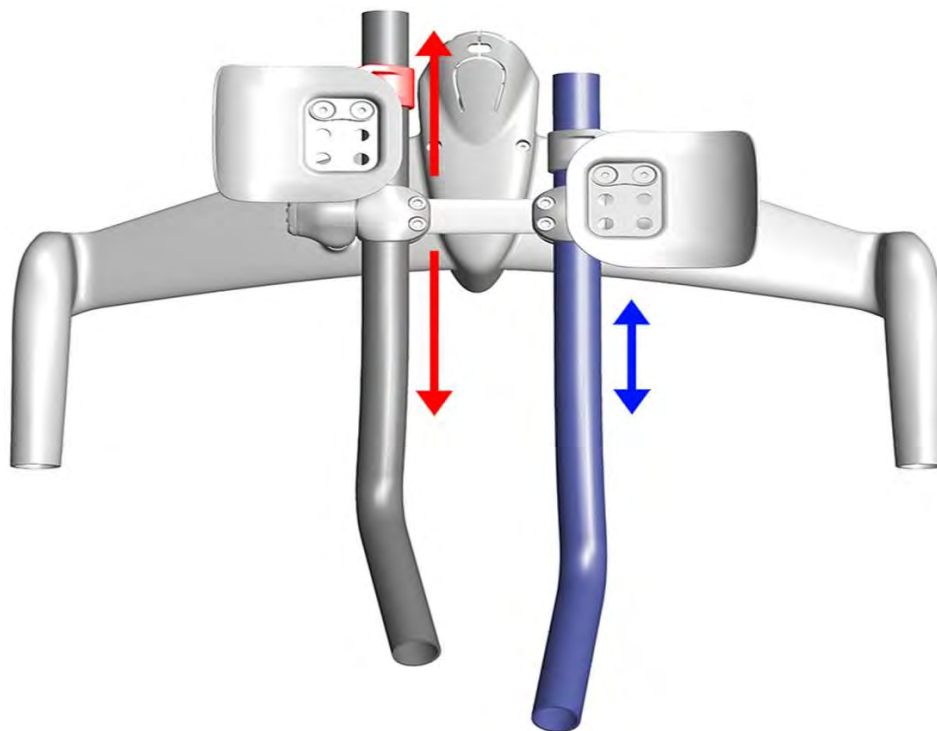


Регулировка ширины





Регулировка вылета

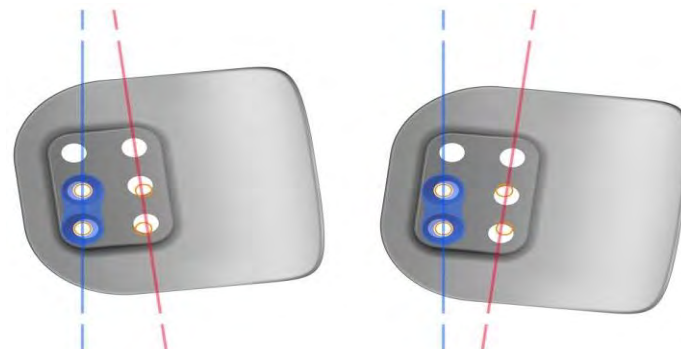
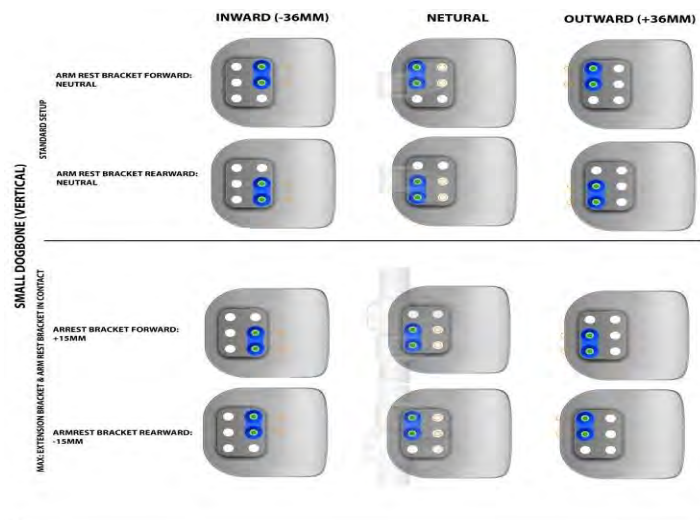




Регулировка подлокотника

Интерфейс для крепления подлокотника и косточки
Регулировка переднего/заднего хода и ширины

Регулировка поворота



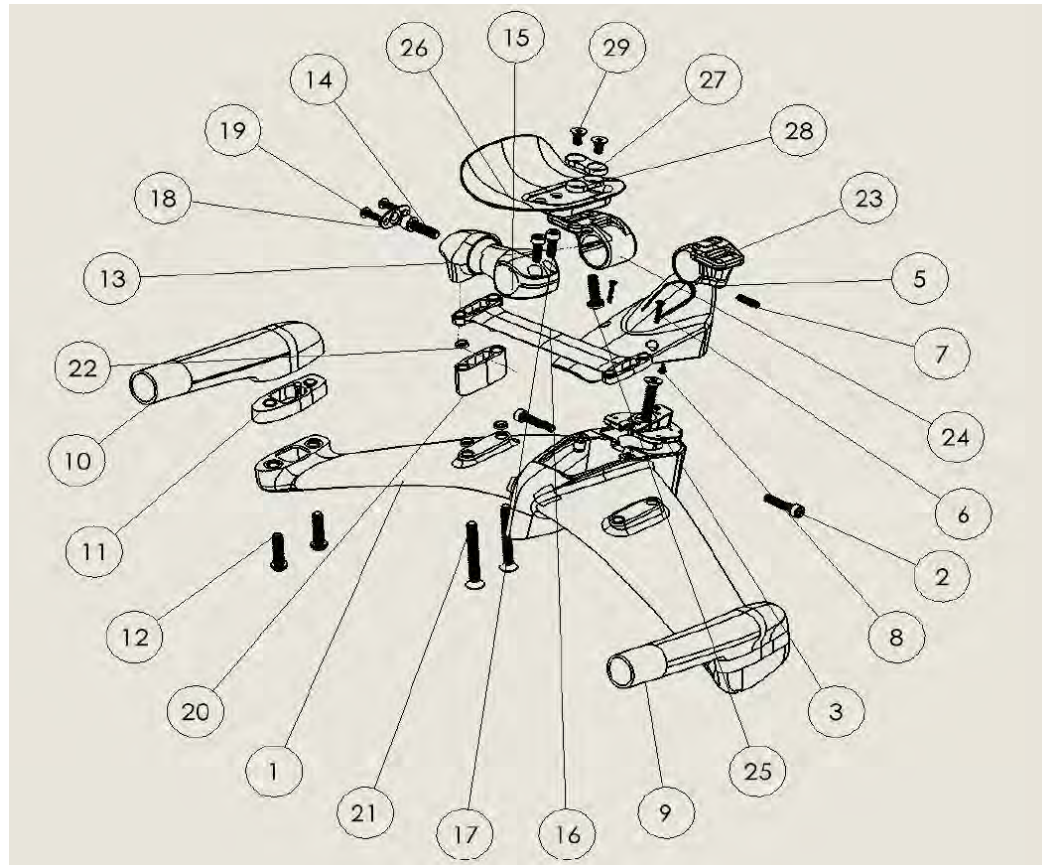


IA (2.0) HANDLE BAR MANUAL SUPPLEMENT

FELT
BICYCLES / CALIFORNIA



BOM – ASSEMBLED PARTS





Aerobar-Stem-Combination Install

Items needed

- Aerobar-Stem-Combination: Felt Dagger Direct 2.0 ASC
- (2) M5X0.8X25MM SOCKET HEAD HEX DRIVE SCREWS
- STEM TOP CAP
- (1) M6X1.0X30MM FLAT HEAD HEX DRIVE SCREW

Tools needed

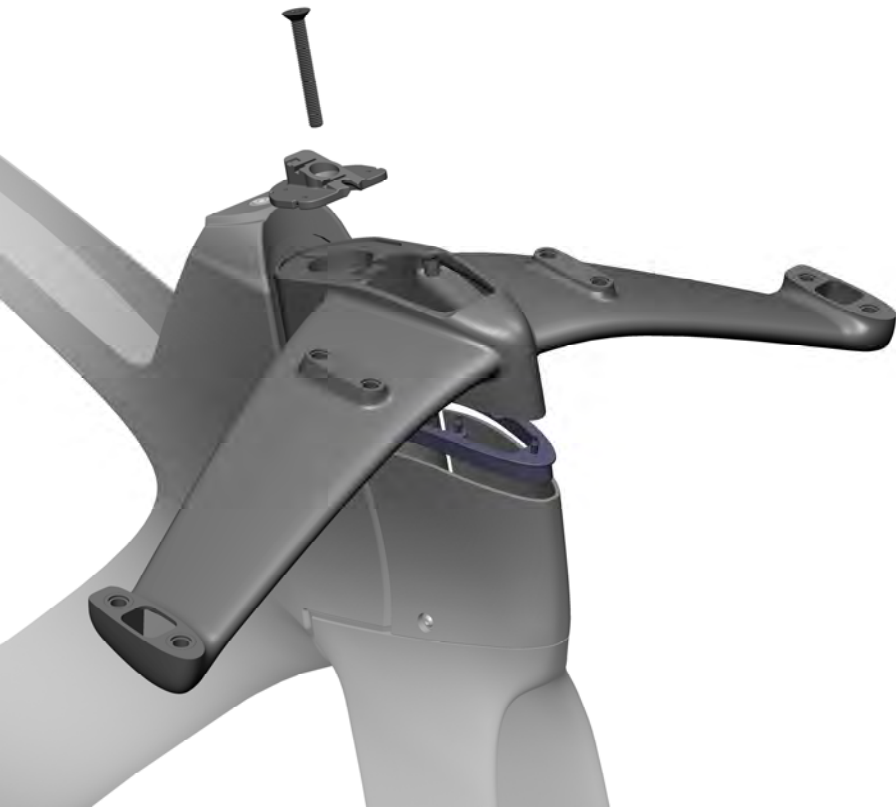
- 4, 5mm hex drive with torque wrench.

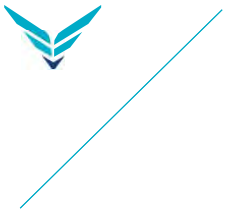
Recommended torque

- M5X0.8X25MM SOCKET HEAD HEX DRIVE SCREWS 5-6NM
- M6X1.0X30MM FLAT HEAD HEX DRIVE SCREW Adjust/tighten headset

Assembly Steps- stem and base bar

1. Install the expander plug into steer tube
2. Mount Aerobar/Stem
3. Install the top cap assembly and adjust/tighten the headset (if using SRAM e-tap install Blip Box before installing top cap)
4. Torque the stem bolts to spec





Aerobar cover install

Items needed

- AEROBAR COVER
- (2) M3X0.5X15MM FLAT HEAD HEX DRIVE SCREWS
- (1) M4X18MM SET SCREW CONE POINT HEX DRIVE
- (1) M3X5MM THREAD-FORMING SCREW FOR THIN PLASTIC HEX DRIVE

Tools needed

- 2,2.5mm hex drive with torque wrench.

Recommended torque

- M3X0.5X15MM FLAT HEAD HEX DRIVE SCREWS (2NM)
- M4X18MM SET SCREW CONE POINT HEX DRIVE (2NM)
- M3X5MM THREAD-FORMING SCREW FOR THIN PLASTIC HEX DRIVE (adjust till proper button contact)

Assembly Steps- stem and base bar

1. Wireless: for SRAM, mount BlipBox to stem top cap using supplied hardware. For Shimano, skip to step 2.

Electronic: for Shimano Di2 systems with Junction-A, mount Junction-A to stem top cap.

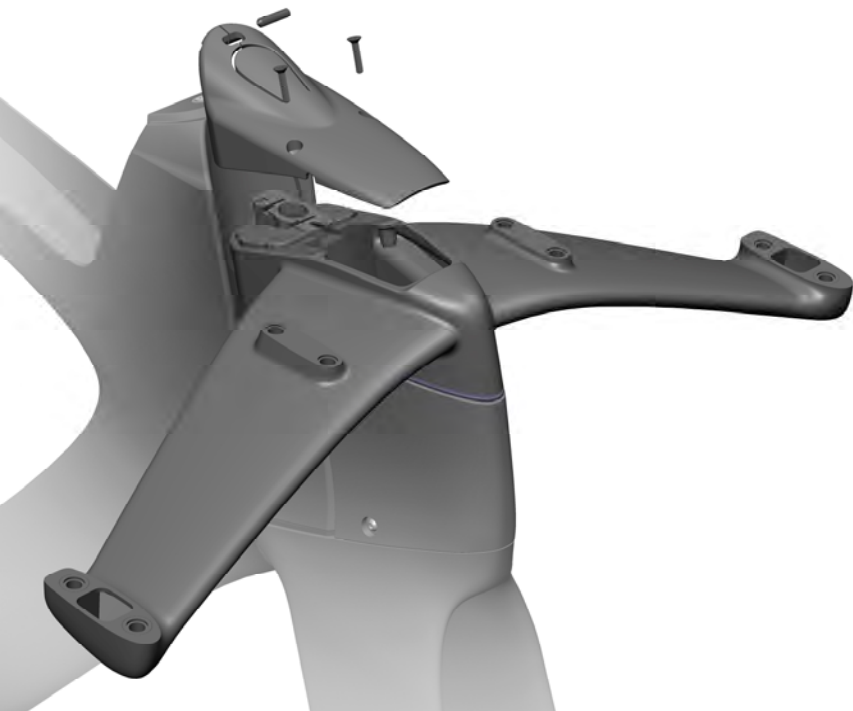
Mechanical: skip to step 2

2. Install M4x18mm set screw cone point hex drive into aerobar cover. Adjust till proper button contact.

Wireless/mechanical: forward position.

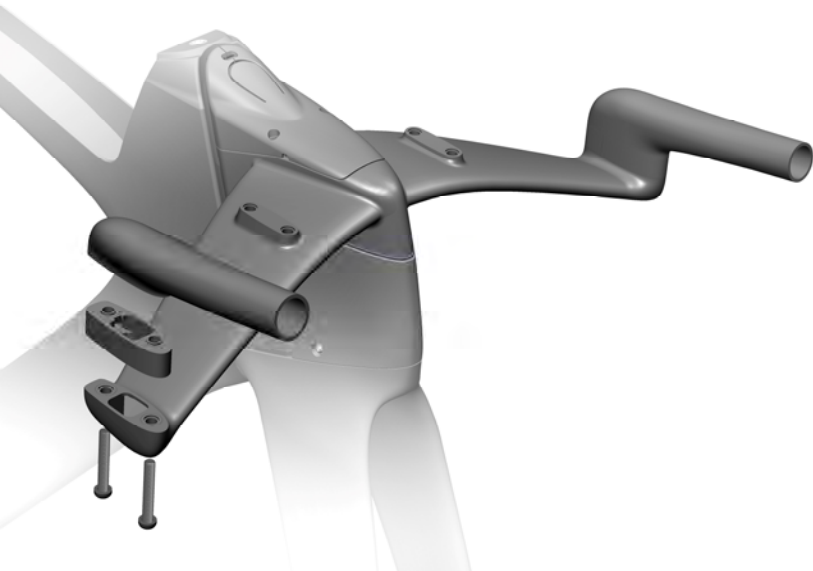
Electronic (Di2 systems with Junction-A): rearward position.

3. Mount aerobar cover onto stem. install (2) m3x0.5x15mm flat head hex drive screws through aerobar cover and into stem





AEROBAR PARTS - HANDHOLD ASSEMBLY



Items needed

- Dagger direct 2.0 Handholds, Left and Right
- Dagger direct 2.0 Handhold spacer selection (10,20,30,40mm)
- Dagger direct 2.0 Handhold bolt selection (M6 x 25,35,45,55,65mm)
- Fit washer
- Grease

Tools needed

- 4mm hex drive with torque wrench.

Recommended torque

- M6 Button head screw (10NM)

Assembly Steps- Handholds

1. **Determine desired stack** height and collect correct spacers and hardware from chart below.
2. Apply a small amount of grease to threads and insert screws through base bar
3. Put desired spacers on base bar and thread screws into hand holds
4. Torque to spec

Stack height (from frame stack)	Spacer Config	Bolt Length	Fit Washers
70	40	65	0
60	30	55	0
50	20	45	0
40	10	35	0
30	0	25	4



AEROBAR PARTS – RISER BRACKET ASSEMBLY

Items needed

- Dagger Direct 2.0 riser bracket
- Dagger Direct 2.0 Spacer kit (5,10,20,30,40mm)
- Dagger Direct 2.0 M6 Screw kit (35,45,55,65,75mm)
- Dagger Direct Bridge
- Fit washers
- Grease

Tools needed

- 4mm hex drive with torque wrench.

Recommended torque

- M6 FLAT HEAD HEX DRIVE SCREWS (10NM)

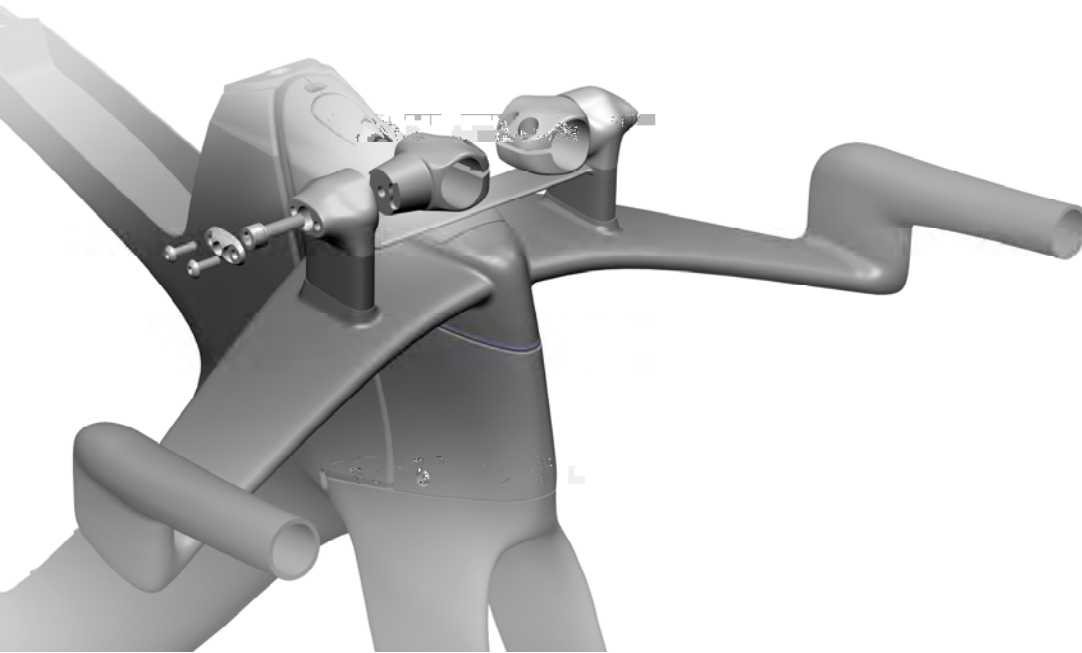
Assembly Steps- stem and base bar

1. **Determine desired stack height** and collect correct spacers and hardware from chart below. (if using stack over 82mm be sure to use the bridge)
2. Apply a small amount of grease to the selected screws and insert through base bar
3. Install fit washers on each screw before installing spacer. Install desired spacer stack on screws making sure to install fit washers between each spacer (at every mating point use fit washers except for bridge mating points)
4. Thread screws into riser bracket and torque

Stack height (from frame stack)	Extensions stack			
	Spacer Config	Total Spacers	Bolt Length	Number of Fit washers
102	35+5+bridge	45	75	8
97	35+bridge	40	75	4
92	25+5+bridge	35	65	8
87	25+bridge	30	65	4
82	25	25	55	4
77	20	20	55	8
72	10 + 5	15	45	12
67	10	10	45	8
62	5	5	35	8
57		0	35	4



AEROBAR PARTS – EXTENSION BRACKET ASSEMBLY



Items needed

- Dagger 2.0 riser bracket extraction cap
- Dagger 2.0 extension bracket
- (4) M4x0.7x12MM ROUNDED HEAD HEX DRIVE SCREW
- (2) M6x1.0x25MM SOCKET HEAD HEX DRIVE SCREW
- Carbon paste
- Grease

Tools needed

- 2.5, 5 mm hex drive with torque wrench.

Recommended torque

- M4x0.7x12MM ROUNDED HEAD HEX DRIVE SCREW (2NM)

Assembly Steps- stem and base bar

1. Apply a small amount of grease to the M6 socket head and threads, insert into the Riser bracket
2. Install the 2 M4 screws into the riser bracket extraction cap and thread into the riser bracket and torque.
3. Apply carbon paste to the extension bracket conical portion and thread M6 screw using 5mm allen into extension bracket , do not fully torque



AEROBAR PARTS - EXTENSION ASSEMBLY

Items needed

- Extensions
- (4) M5x0.8x14MM
- Grease

Tools needed

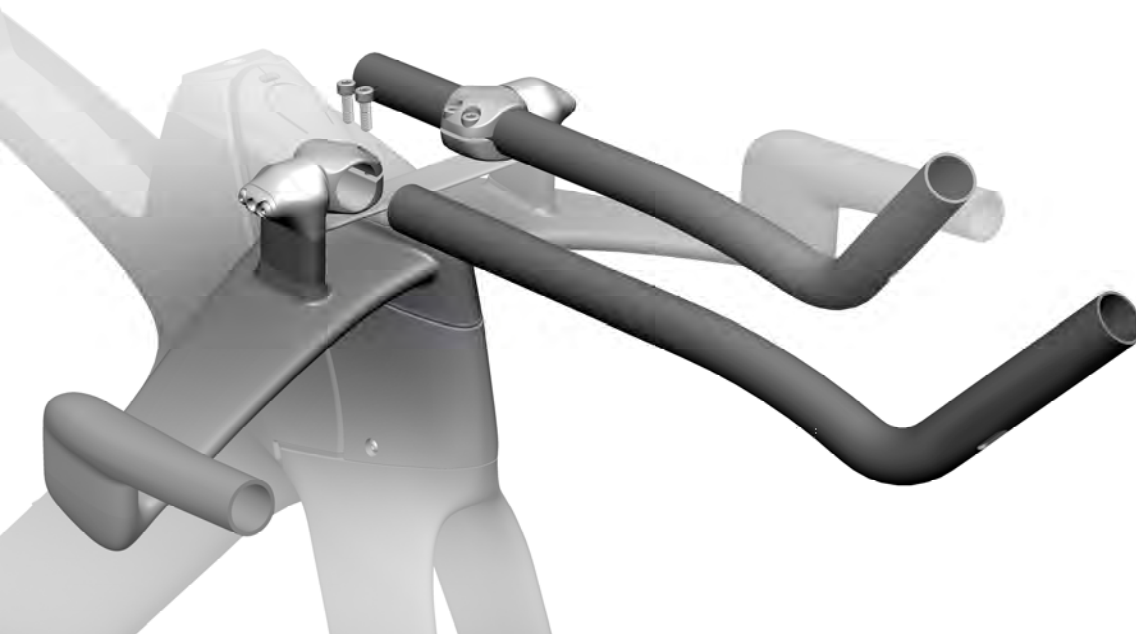
- 4, 5mm hex drive with torque wrench.

Recommended torque

- M6x1.0x25MM SOCKET HEAD HEX DRIVE SCREW (12NM)
- M5x0.8x14MM SOCKET HEAD HEX DRIVE SCREW (8NM)

Assembly Steps- stem and base bar

1. Apply grease to threads of M5 screws and thread into extension brackets
2. Inset extension into extension bracket
3. Find desired reach angel and rotation angle
4. Torque M5 and M6 screws





AEROBAR PARTS – ARMPAD ASSEMBLY

Items needed

- DAGGER DIRECT 2.0 LEFT AND RIGHT ARM REST BRACKET
- BAYONETE 3.1 LEFT AND RIGHT ARM REST HOLDER
- Arm pad
- Dog bone washers
- M6X1.0X15MM BUTTON HEAD HEX DRIVE SCREWS
- M5X12MM SET FLAT HEAD HEX DRIVE SCREWS

Tools needed

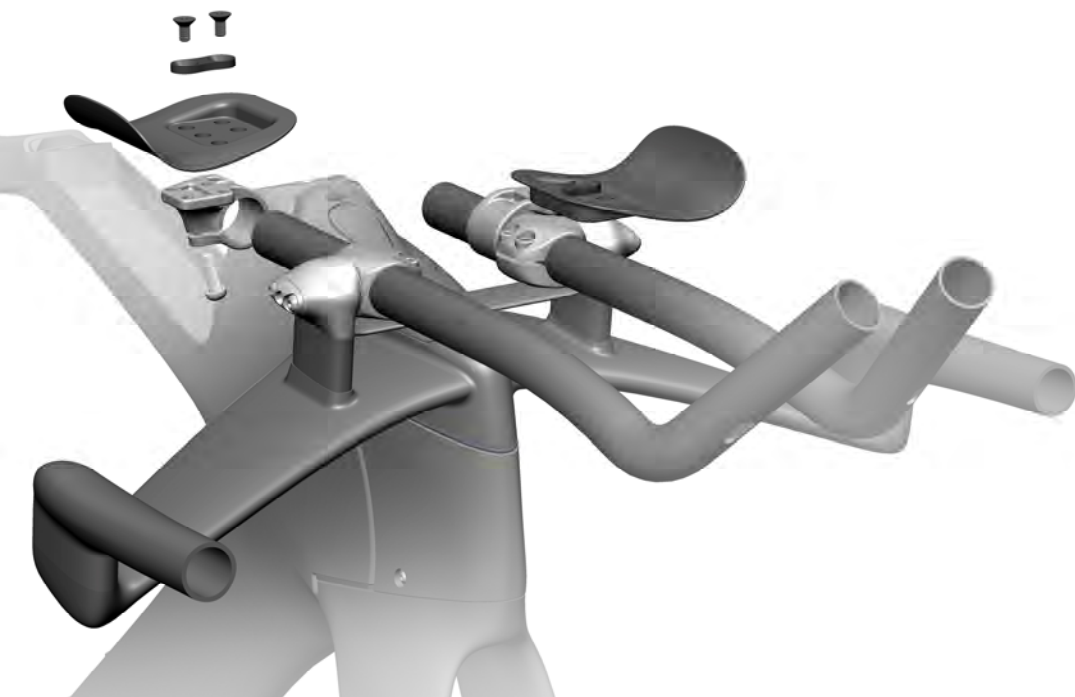
- 4, 5mm hex drive with torque wrench.

Recommended torque

- M6X1.0X15MM BUTTON HEAD HEX DRIVE SCREWS (10NM)
- M5X12MM SET FLAT HEAD HEX DRIVE SCREWS (6NM)

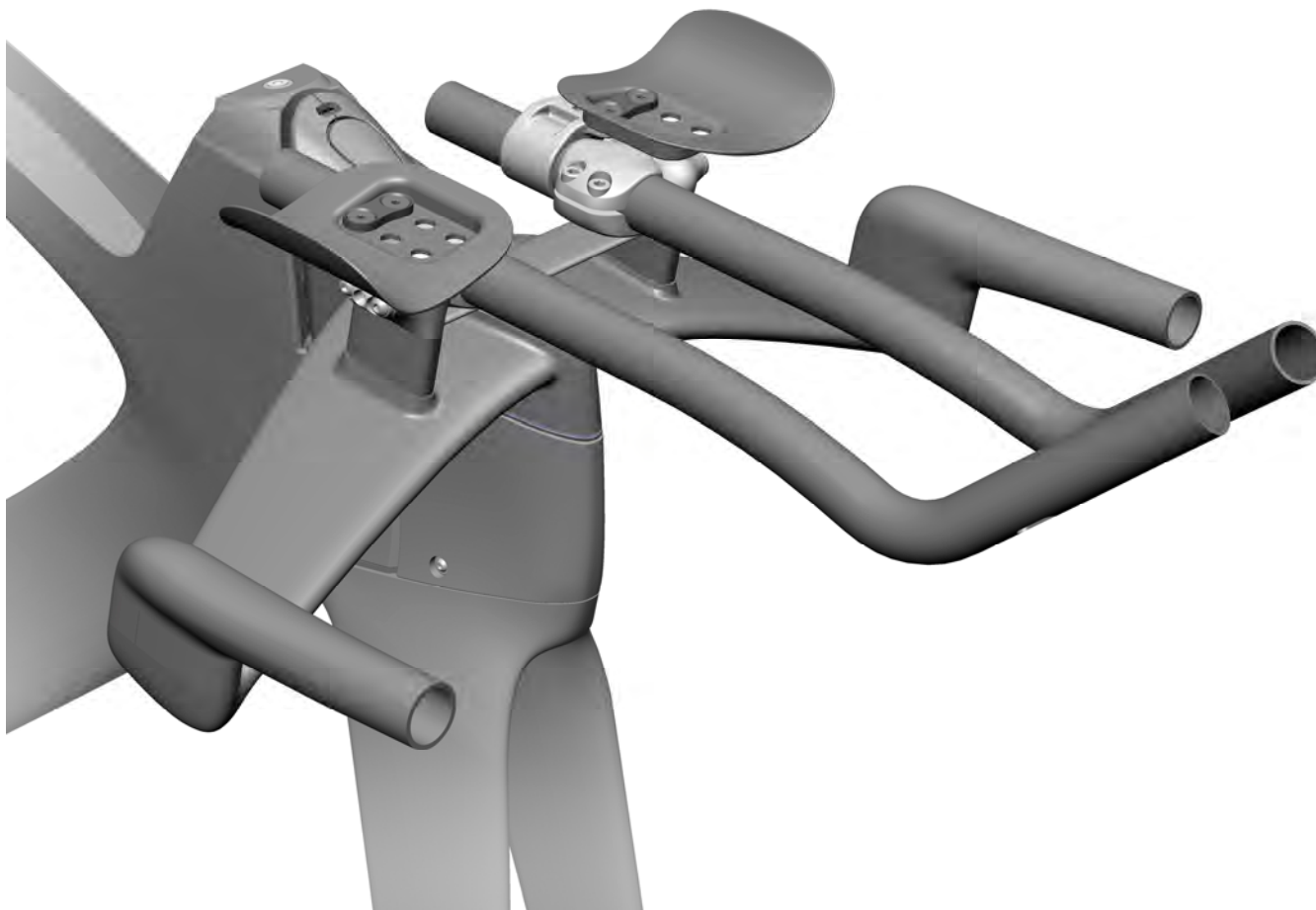
Assembly Steps- stem and base bar

1. Apply grease to threads of M5 screw and thread into arm rest bracket and slide onto extension
2. Apply grease to M6 screws and install using dog bone washer (short dog bone washer can be used for more side to side adjustment) on arm rest holder screw onto arm rest bracket and torque
3. Rotate arm rest brackets to desired position and torque M5 screw
4. Install arm rest pads





AEROBAR – COMPLETE



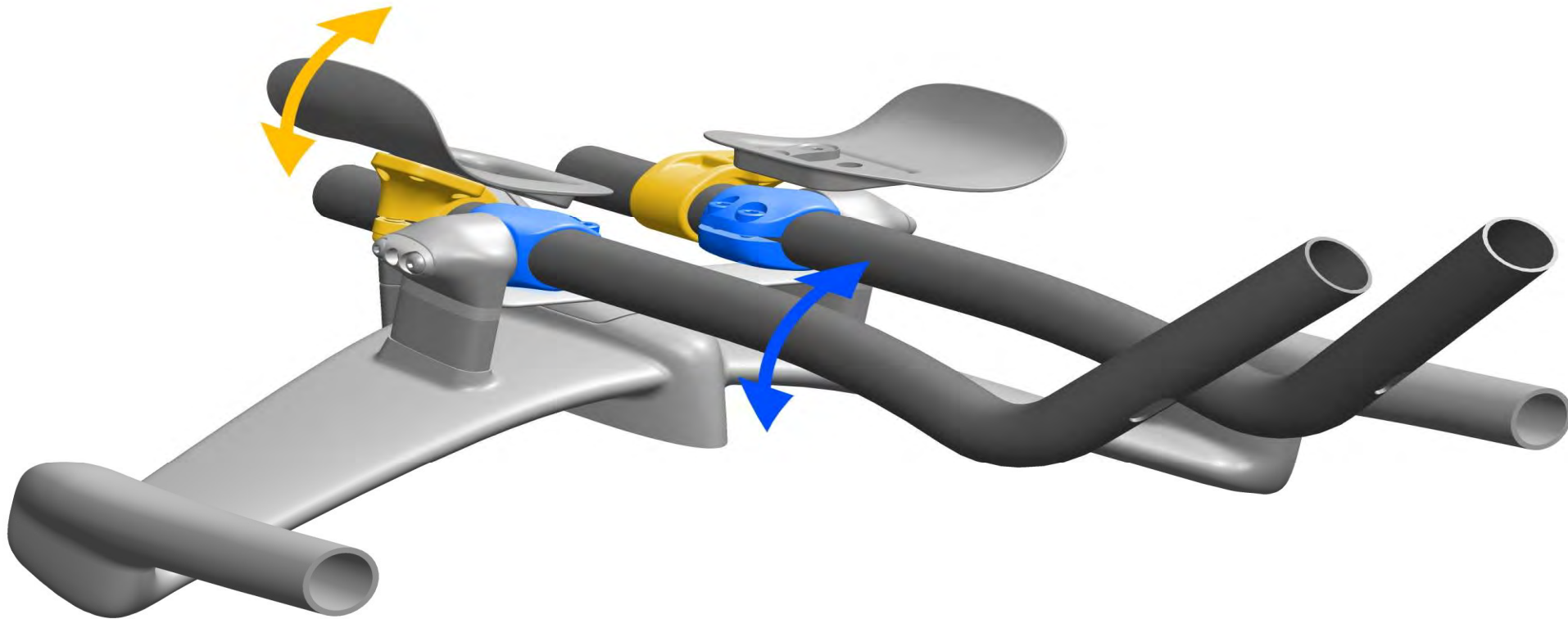


Stack



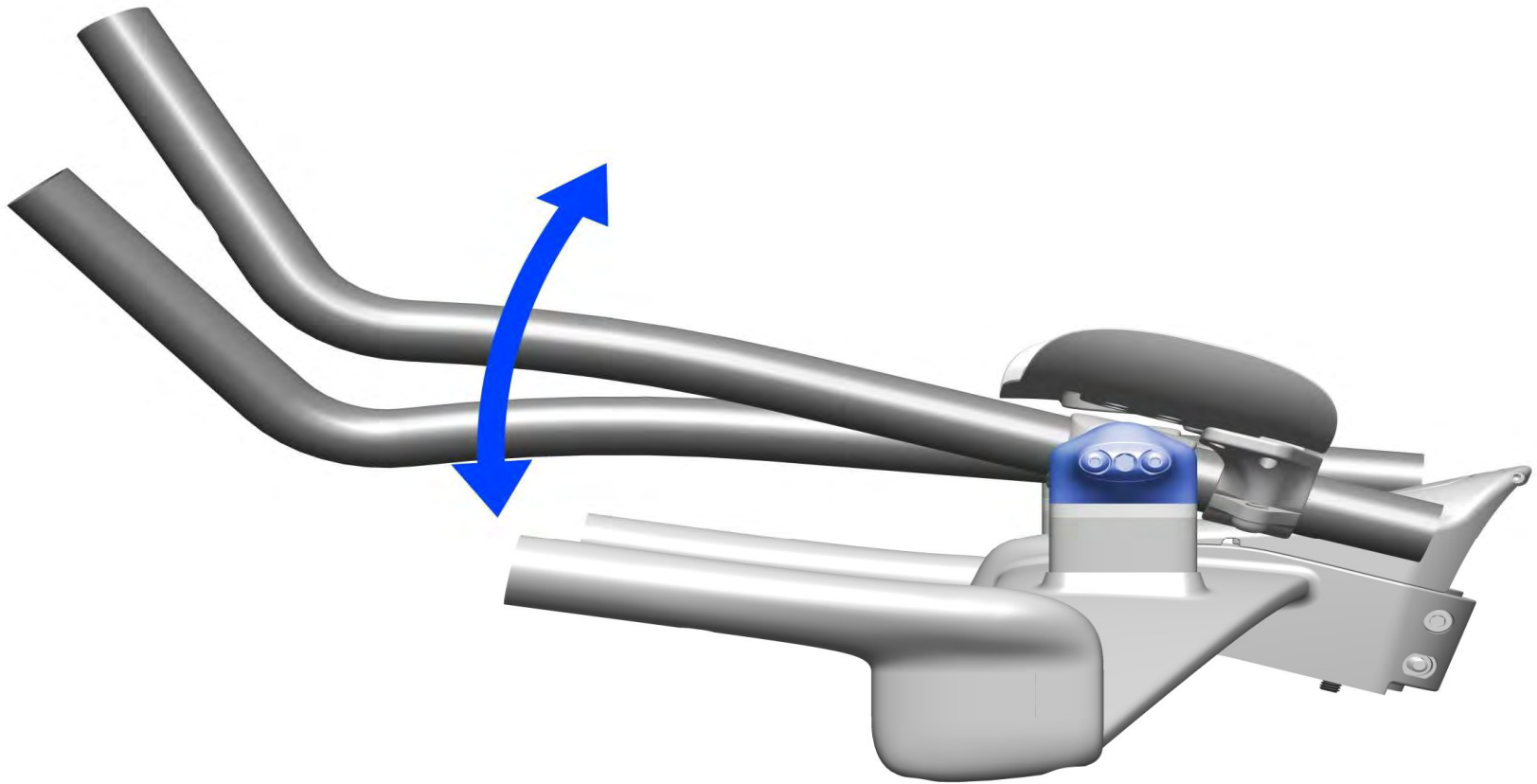


Medial/Lateral adjustment



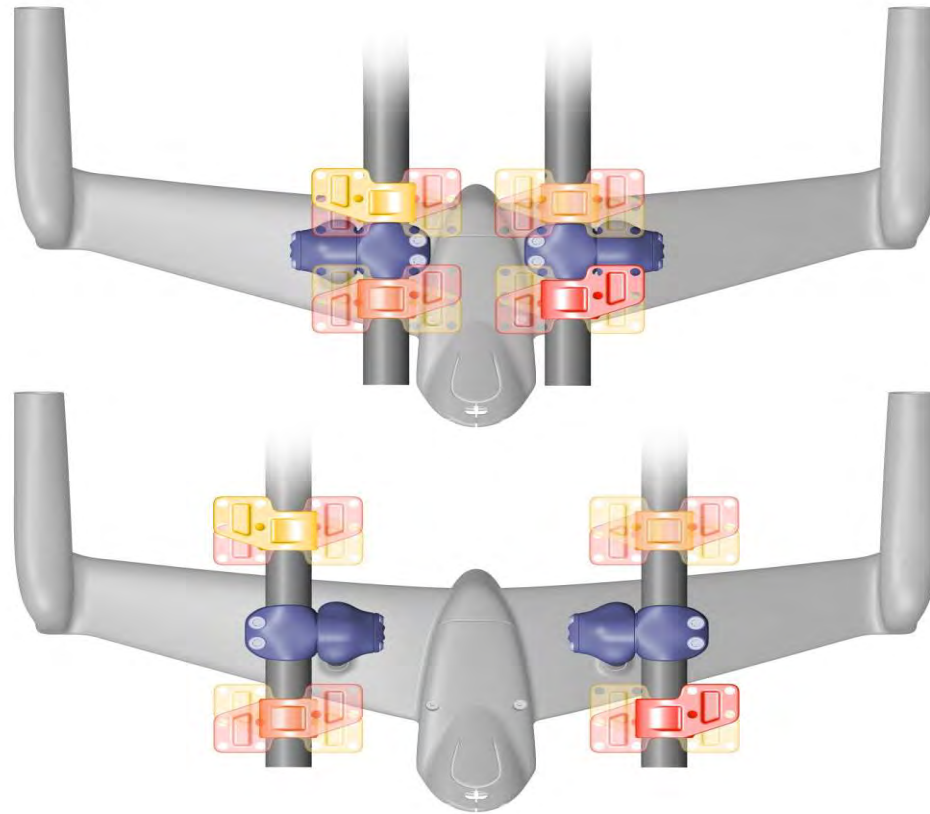


Angle adjust



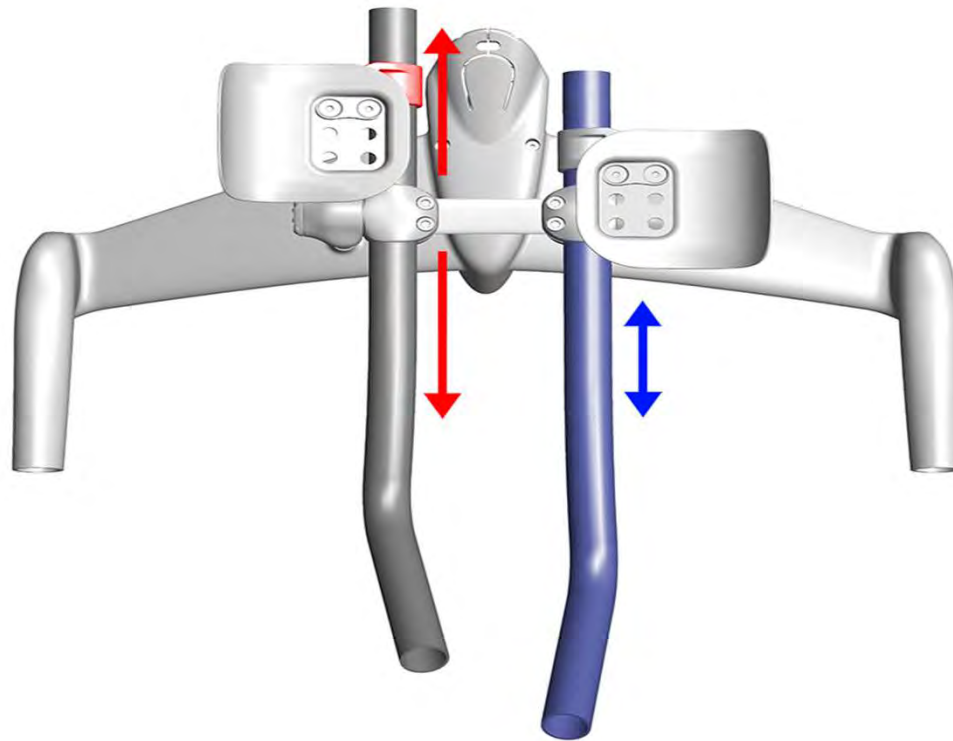


Width Adjustment





Reach Adjustment





Arm Pad Adjustment

Dog bone and armrest bracket interface
Fore / aft & width adjustment

Rotation adjustment

